



# MENTORING TOOLKIT

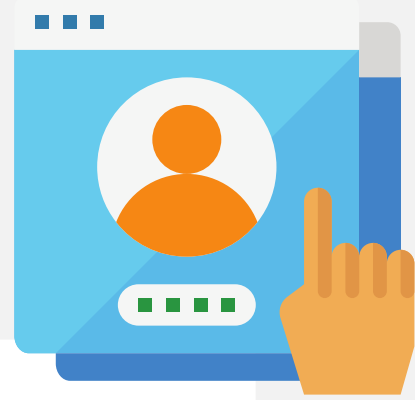
## Empowering Growth Through Guided Connections

**The mentoring plan is a framework for nurturing effective mentor-mentee relationships in scientific contexts across Europe and beyond.**

The Mentoring Toolkit is a comprehensive platform designed to empower early-career researchers by providing personalized guidance, resources, and networking opportunities. The toolkit features an advanced matching algorithm for mentor-mentee pairings, goal-setting modules utilizing SMART criteria, and detailed user profiles for both mentors and mentees. A resource library offers personalized recommendations, and a communication platform streamlines interactions. The feedback and evaluation system includes regular check-ins and surveys, ensuring a dynamic mentoring experience. Multi-dimensional networking opportunities, a research collaboration platform, and a sophisticated job board enhance career development. The toolkit also includes features for CV and portfolio building, ethical guidelines, funding opportunities, progress tracking, and community building. The toolkit prioritizes user support, personal development modules, and a responsive user interface, fostering a vibrant and inclusive community for research professionals.

## LIST OF CONTENT

<b>1. User Profiles .....</b>	<b>3</b>
<b>2. Matching Algorithm .....</b>	<b>5</b>
<b>3. Goal Setting.....</b>	<b>7</b>
<b>4. Communication Platform .....</b>	<b>9</b>
<b>5. Feedback and Evaluation.....</b>	<b>11</b>
<b>6. Event Calendar .....</b>	<b>13</b>
<b>7. Networking Opportunities .....</b>	<b>14</b>
<b>8. Job Board .....</b>	<b>16</b>
<b>9. CV and Portfolio Building.....</b>	<b>18</b>
<b>10. Funding Opportunities.....</b>	<b>21</b>
<b>11. Progress Tracking .....</b>	<b>24</b>
<b>12. Community Building.....</b>	<b>27</b>
<b>13. Personal Development Modules.....</b>	<b>30</b>
<b>14. User Support .....</b>	<b>33</b>



## 1. USER PROFILES

Allow researchers to create comprehensive profiles with detailed information about their educational background, specific research interests, ongoing projects, recent publications, and professional affiliations. Include options for adding multimedia elements such as project presentations or video summaries. Enable users to update their profiles regularly, providing a dynamic snapshot of their academic journey.

### Mentee Profile Form:

#### **Personal Information:**

Full Name:

Email:

Contact Number:

Current Institution:

#### **Academic Background:**

Highest Degree Obtained:

Field of Study:

Graduation Year:

Relevant Certifications:

#### **Research Interests:**

Primary Research Area:

Secondary Research Areas (if applicable):

Specific Topics of Interest:

#### **Current Projects:**

Brief Description of Ongoing Research Projects:

Project Duration:

Key Collaborators (if any):

#### **Research Interests:**

Primary Research Area:

Secondary Research Areas (if applicable):

Specific Topics of Interest:

#### **Current Projects:**

Brief Description of Ongoing Research Projects:

Project Duration:

Key Collaborators (if any):





**Career Goals:**

Short-Term Career Objectives:

Long-Term Career Aspirations:

Areas Seeking Mentorship:

**Publications:**

List of Published Papers (if any):

Conference Presentations (if any):

Pending or Submitted Manuscripts:

**Skills and Expertise:**

Technical Skills:

Methodologies:

Other Relevant Expertise:

**Professional Memberships:**

Memberships in Academic or Professional Organizations:

**Networking Preferences:**

Preferred Communication Channels (e.g., email, video calls):

Frequency of Interactions (e.g., weekly, bi-weekly):

**Additional Information:**

Any Additional Information or Preferences Relevant to Mentoring:

**Mentor Profile Form:**

**Career Goals:**

Short-Term Career Objectives:

Long-Term Career Aspirations:

Areas Seeking Mentorship:

**Publications:**

List of Published Papers (if any):

Conference Presentations (if any):

Pending or Submitted Manuscripts:

**Skills and Expertise:**

Technical Skills:

Methodologies:

Other Relevant Expertise:

**Professional Memberships:**

Memberships in Academic or Professional Organizations:

**Networking Preferences:**

Preferred Communication Channels (e.g., email, video calls):

Frequency of Interactions (e.g., weekly, bi-weekly):

**Additional Information:**

Any Additional Information or Preferences Relevant to Mentoring:





## 2. MATCHING ALGORITHM

Develop a robust matching algorithm that takes into consideration a myriad of factors including research focus, methodology, geographical preferences, career aspirations, and even personality traits. Incorporate machine learning techniques to refine matches over time based on user feedback. Ensure transparency in the matching process, allowing users to understand the criteria that contribute to their pairings.

### Matching algorithm:

#### **Research Interests:**

Assign weights to different research interests based on the level of specificity. For example, if a mentor's primary research interest aligns closely with a mentee's, it receives a higher weight.

#### **Expertise Level:**

Consider the expertise level of both mentors and mentees. Weight mentors with more experience higher, but also consider the potential benefits of pairing with mentors who have recently navigated challenges similar to those faced by the mentee.

#### **Geographical Location:**

Assign a weight to geographical proximity, especially if face-to-face meetings or collaboration is a priority for the mentee. Consider the potential benefits of both local and global connections.

#### **Career Stage:**

Take into account the career stage of both mentors and mentees. A mid-career mentor might be more suitable for a mid-career mentee, while an early career mentor could be more relatable for an early career mentee.

#### **Personality Traits:**

If available, incorporate self-reported personality traits or working styles. This can be gathered through optional surveys or self-assessments. Match individuals with compatible working styles to enhance collaboration.

#### **Feedback from Previous Pairings:**

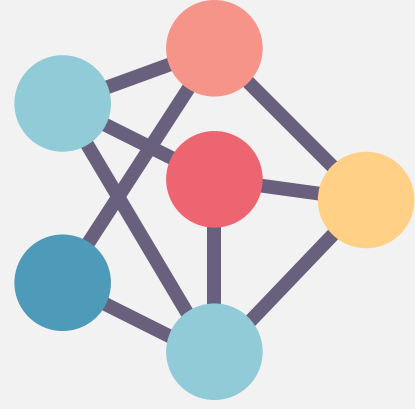
Incorporate feedback from previous mentor-mentee pairings within the platform. If certain pairs have reported high satisfaction and successful outcomes, consider the factors that contributed to this success when making new matches.

#### **Preferred Communication Style:**

Allow mentors and mentees to indicate their preferred communication styles (e.g., frequency of communication, preferred channels). Match individuals with complementary communication preferences to enhance effective interaction.

#### **Time Availability:**

Take into account the availability of both mentors and mentees. Match individuals with compatible schedules to facilitate regular and meaningful interactions.



## Matching algorithm:

- Assign a numerical score to each factor based on the weights assigned.
- Calculate an overall compatibility score for each potential mentor-mentee pair by summing the weighted scores.
- Rank potential pairs based on their compatibility scores.
- Implement a threshold to ensure that matches meet a minimum level of compatibility.
- Present top-ranked matches to mentees, allowing them to review profiles and make a final selection.



## 3. GOAL SETTING

Develop a goal-setting module that guides users in articulating specific, measurable, achievable, relevant, and time-bound (SMART) goals. Include visualization tools that illustrate progress over time. Implement notifications and reminders to keep users on track and provide personalized suggestions or resources that align with their goals.

### **User-Friendly Dashboard:**

- Provide a clean and intuitive dashboard within the mentoring tool where users can access the goal-setting module. The dashboard should highlight the importance of setting SMART goals and encourage users to regularly review and update their objectives.

### **SMART Goal Template:**

- Offer a standardized template that prompts users to input information for each component of a SMART goal:
  - Specific: Clearly define what the goal entails.
  - Measurable: Establish criteria to track progress and determine when the goal is achieved.
  - Achievable: Ensure the goal is realistic and feasible.
  - Relevant: Confirm the goal aligns with broader research and career objectives.
  - Time-Bound: Set a realistic timeline or deadline for goal completion.

### **Goal Categories:**

- Allow users to categorize their goals based on different aspects of their research and career development. For instance, categories might include "Research Milestones," "Publications," "Skills Development," and "Career Advancement."

### **Progress Tracker:**

- Integrate a visual progress tracker that displays the status of each goal. Users should easily see how much progress they've made and how much is left to accomplish. Use color-coded indicators or percentage completion to enhance clarity.

### **Reminders and Notifications:**

- Implement a reminder system to prompt users to revisit and update their goals regularly. Users should receive notifications as deadlines approach or when there is a lack of progress, encouraging them to stay on track.

### **Dependencies and Sequencing:**

- Allow users to identify dependencies between goals and sequence them appropriately. For example, a user might need to achieve a certain skill development goal before undertaking a more complex research project.

### **Collaboration Features:**

- Enable mentees and mentors to collaborate on goal-setting. Mentors can provide feedback on the feasibility of goals and offer insights into potential challenges. The module should facilitate constructive discussions around refining and adjusting goals.

**Goal Sharing and Visibility:**

- Allow users to choose whether they want to keep their goals private or share them with their mentors or a broader community. This feature promotes transparency and encourages accountability.

**Adaptive Guidance:**

- Implement adaptive guidance based on user input and progress. For instance, if a user consistently struggles with achieving time-bound goals, the system might provide tailored suggestions for improving time management skills.

**Gamification Elements:**

- Introduce gamification elements to make goal-setting engaging. Users could earn badges or points for achieving goals, contributing to a sense of accomplishment and motivation.

**Data Analytics and Insights:**

- Collect anonymized and aggregated data on goal-setting trends. Provide insights and analytics to users, mentors, and administrators to identify common challenges, successful strategies, and areas for improvement in the goal-setting process.

**Accessibility Features:**

- Ensure the module is accessible to users with diverse needs. Consider features such as screen reader compatibility, adjustable font sizes, and color contrasts to enhance usability.

**Tutorial and Guidance Resources:**

- Offer tutorials and guidance resources within the module to educate users on effective goal-setting strategies, tips for maintaining motivation, and examples of well-crafted SMART goals.

By incorporating these features, the goal-setting module becomes a comprehensive and dynamic tool that not only assists users in articulating SMART goals but also provides ongoing support, feedback, and opportunities for reflection and improvement.





## 4. COMMUNICATION PLATFORM

Integrate a communication platform that supports real-time messaging, video conferencing, and collaborative document editing. Implement features such as asynchronous discussions and threaded conversations to accommodate different communication preferences. Integrate with existing communication tools to streamline interactions seamlessly.

There are various existing communication tools that can be integrated into a mentoring platform to streamline interactions between mentors and mentees. These tools offer a range of features, including messaging, video calls, and collaborative document editing. Here are some examples:

### **Slack:**

#### **Features:**

- Channels for organized group discussions.
- Direct messaging for one-on-one communication.
- File sharing and integration with various apps and tools.
- Video calls and screen sharing.

### **Microsoft Teams:**

#### **Features:**

- Team channels for group discussions.
- Direct chat for individual conversations.
- Integrated document collaboration with Office 365 apps.
- Video calls and meetings.

### **Zoom:**

#### **Features:**

- Video conferencing with HD quality.
- Virtual backgrounds for professional-looking calls.
- Breakout rooms for smaller group discussions.
- Screen sharing and collaborative whiteboards.

### **Google Meet:**

#### **Features:**

- Video meetings with up to 100 participants.
- Screen sharing for presentations.
- Integration with Google Workspace for collaborative editing.
- Live captions and recording options.

### **Microsoft Skype:**

#### **Features:**

- Video and voice calls.
- Instant messaging with file sharing.
- Screen sharing for presentations.
- Integration with Microsoft Office applications.



### **Discord:**

#### **Features:**

- Chat channels for text-based communication.
- Voice channels for real-time discussions.
- Direct messaging.
- File sharing and media embedding.

### **Microsoft Teams:**

#### **Features:**

- Team channels for group discussions.
- Direct chat for individual conversations.
- Integrated document collaboration with Office 365 apps.
- Video calls and meetings.

### **WebEx by Cisco:**

#### **Features:**

- HD video meetings.
- Breakout sessions for smaller group discussions.
- File sharing and screen sharing.
- Integrated messaging and collaboration tools.

### **Trello:**

#### **Features:**

- Boards, lists, and cards for project management.
- Comments and discussion threads on tasks.
- File attachments and checklists.
- Integration with various apps and tools.

### **Asana:**

#### **Features:**

- Video and voice calls.
- Instant messaging with file sharing.
- Screen sharing for presentations.
- Integration with Microsoft Office applications.

### **Jitsi Meet:**

#### **Features:**

- HD video meetings.
- Breakout sessions for smaller group discussions.
- File sharing and screen sharing.
- Integrated messaging and collaboration tools.

### **Miro:**

#### **Features:**

- Online collaborative whiteboard.
- Real-time collaboration on diagrams and charts.
- Integration with popular project management tools.
- Video conferencing integration.

When integrating a communication tool into a mentoring platform, it's essential to consider factors such as ease of use, scalability, security, and the specific needs of the mentoring program.



## 5. FEEDBACK AND EVALUATION

Establish a comprehensive feedback system that includes regular check-ins, surveys, and a feedback loop embedded within the mentoring tool. Provide a dashboard for both mentors and mentees to track progress and evaluate the effectiveness of the mentoring relationship over time. Use this data to continuously refine the matching algorithm and improve the overall tool.

### **MATCHING ALGORITHM:**

#### **Key Components:**

##### **Regular Check-ins:**

###### **Scheduled Check-ins:**

- Facilitates scheduled check-ins between mentors and mentees at predefined intervals, ensuring consistent communication and progress tracking.

###### **Progress Updates:**

- Enables mentees to provide brief progress updates on their goals and projects during check-ins, fostering accountability and transparency.

###### **Discussion Points:**

- Includes predefined discussion points to guide check-in conversations, covering areas such as research progress, challenges faced, and upcoming milestones.

##### **Surveys:**

###### **Post-Interaction Surveys:**

- Triggers short surveys following mentor-mentee interactions to gather immediate feedback on the quality and effectiveness of the communication.

###### **Periodic Surveys:**

- Sends periodic surveys to both mentors and mentees to capture insights on the overall mentoring experience, satisfaction levels, and areas for improvement.

###### **Topic-specific Surveys:**

- Deploys targeted surveys on specific topics, allowing mentors and mentees to provide in-depth feedback on particular aspects of the mentoring relationship or program.

##### **Feedback Loop:**

###### **Real-time Feedback Mechanism:**

- Establishes a real-time feedback mechanism within the mentoring tool, allowing mentors and mentees to provide feedback at any time, not just during predefined surveys.

###### **Anonymous Feedback Option:**

- Provides an option for users to submit anonymous feedback, encouraging open and honest communication without fear of repercussions.



**Feedback Categories:**

- Categorizes feedback into different areas such as communication, goal setting, and mentorship effectiveness, enabling targeted analysis and improvement.

**Actionable Insights:**

- Generates actionable insights from feedback data, identifying trends, strengths, and areas for enhancement in the mentoring program.

**Dashboard and Analytics:**

**User-friendly Dashboard:**

- Presents a user-friendly dashboard for mentors and mentees to view summaries of feedback received, progress over time, and areas of commendation.

**Analytics Reports:**

- Generates comprehensive analytics reports for program administrators, offering a holistic view of the mentoring program's success and areas needing attention.

**Trend Analysis:**

- Conducts trend analysis on feedback data to identify patterns and recurring themes, helping in proactive program adjustments.

**Continuous Improvement Initiatives:**

**Action Plans:**

- Develops action plans based on feedback insights, outlining specific steps to address identified areas of improvement.

**Training and Resources:**

- Offers targeted training sessions and additional resources to mentors and mentees based on feedback, enhancing their mentoring skills and knowledge.

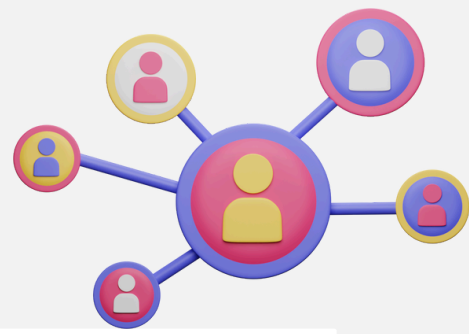
**Iterative Feedback Gathering:**

- Implements iterative feedback gathering, encouraging mentors and mentees to regularly provide input on the impact of implemented improvements.



## 6. EVENT CALENDAR

Develop a dynamic event calendar that not only lists upcoming conferences and webinars but also integrates with users' profiles to recommend events based on their research interests and goals. Include features for users to mark attendance, rate events, and share insights with the community.



## 7. NETWORKING OPPORTUNITIES

Create a networking platform with discussion forums, interest-based groups, and virtual meetups. Introduce features like mentorship circles, where mentors can collaborate and share insights, creating a supportive and interconnected community. Implement gamification elements to encourage active participation.

### **NETWORK:**

#### **Key Features:**

##### **Discussion Forums:**

###### **Topic-Centric Forums:**

- Organizes discussion forums around specific topics relevant to the academic and research interests of users. Each forum serves as a dedicated space for in-depth discussions.

###### **Mentoring Circles:**

- Introduces mentoring circles within the discussion forums, where mentor-mentee pairs, as well as other community members, can engage in focused conversations.

###### **Resource Exchange Forum:**

- Establishes a dedicated forum for resource exchange, where users can share valuable articles, research papers, and other materials, fostering a collaborative knowledge-sharing environment.

##### **Interest-Based Groups:**

###### **Research Interest Groups:**

- Enables users to join or create research interest groups based on their specific areas of expertise or interest. These groups serve as virtual communities for like-minded researchers.

###### **Career Development Groups:**

- Introduces groups focused on career development, allowing users to share insights, seek advice, and discuss strategies for advancing their academic and professional journeys.

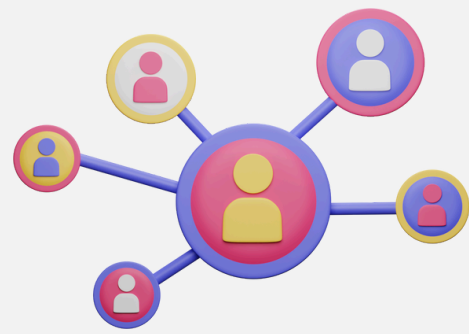
###### **Project Collaboration Groups:**

- Facilitates the formation of groups centered around collaborative projects, providing a platform for users to find potential collaborators and initiate research partnerships.

##### **Virtual Meetups and Events:**

###### **Scheduled Virtual Meetups:**

- Offers a calendar of scheduled virtual meetups, allowing users to connect in real-time for informal networking, knowledge exchange, and discussions on specific topics.



**Organized Networking Events:**

- Hosts organized networking events within the platform, featuring guest speakers, panel discussions, and interactive sessions to enhance networking opportunities.

**Community Recognition System:**

**Contributor Badges:**

- Recognizes active contributors within discussion forums and interest-based groups with contributor badges, encouraging engagement and knowledge sharing.

**Mentor-Mentee Spotlight:**

- Highlights exemplary mentor-mentee pairs and their collaborative achievements, providing visibility to successful mentoring relationships.

**User Profiles Integration:**

**Network Profiles:**

- Integrates networking profiles seamlessly with users' main profiles, allowing them to showcase their expertise, research interests, and collaborative achievements within the networking platform.

**Networking Preferences:**

- Enables users to set networking preferences, indicating their availability for virtual meetups, interest in specific discussion forums, and willingness to participate in mentoring circles.

**Gamification Elements:**

**Leaderboards:**

- Introduces leaderboards based on active participation, contribution to discussions, and collaborative projects, adding a gamified element to the networking experience.

**Achievement Unlocks:**

- Incorporates achievement unlocks for specific milestones, such as initiating a successful collaboration or contributing valuable resources to the community.

**Resourceful Networking Resources:**

**Guides and Tips:**

- Offers guides and tips on effective networking strategies within academic and research communities, helping users maximize the benefits of the networking platform.

**Networking Toolkit:**

- Provides a networking toolkit that includes templates for introducing oneself, initiating collaboration requests, and expressing interest in specific research areas.



## 8. JOB BOARD

Develop job board that aggregates not only academic positions but also industry opportunities, internships, and freelance projects. Implement filters that allow users to refine job searches based on their preferences and career goals. Introduce personalized job alerts to keep users informed about relevant opportunities.

### **JOB BOARD:**

#### **Key Features:**

##### **Diverse Job Categories:**

###### **Academic Positions:**

- Includes faculty positions, research roles, and academic leadership opportunities in universities and research institutions.

###### **Industry Opportunities:**

- Aggregates job listings from various industries, including technology, healthcare, finance, and more, providing a comprehensive range of options for professionals with research backgrounds.

###### **Internships:**

- Features internship opportunities for students and early career professionals to gain hands-on experience in both academic and industry settings.

###### **Freelance Projects:**

- Showcases freelance and project-based opportunities, allowing researchers to explore short-term collaborations and contribute to specific projects.

##### **Advanced Search and Filters:**

###### **Customizable Filters:**

- Enables users to filter job listings based on criteria such as job type, location, industry, required skills, and level of experience.

###### **Saved Searches:**

- Allows users to save personalized job searches and receive notifications when new opportunities matching their criteria are posted.

##### **Company Profiles:**

###### **Detailed Company Profiles:**

- Provides detailed profiles for hiring organizations, including information about their mission, values, culture, and current projects, helping applicants make informed decisions.

###### **Employee Reviews:**

- Integrates employee reviews and ratings, offering insights into the workplace environment and employee satisfaction within hiring organizations.





### **Application Tracking System:**

#### **Unified Application Dashboard:**

- Offers a centralized dashboard for users to track and manage their job applications across different opportunities.

#### **Application Status Updates:**

- Sends real-time updates on the status of job applications, from submission to shortlisting and interview invitations.

### **Networking and Referral Opportunities:**

#### **Referral Programs:**

- Integrates referral programs where professionals can refer colleagues or friends to job opportunities, fostering a sense of community and networking.

#### **Connect with Recruiters:**

- Enables users to connect directly with recruiters and hiring managers, providing a platform for networking and informational interviews.

### **Skill and Career Development Resources:**

#### **Integrated Learning Resources:**

- Integrates learning resources, including webinars, workshops, and courses, to help users enhance their skills and stay competitive in their fields.

#### **Career Advice and Articles:**

- Publishes articles and advice on career development, job searching, and industry trends, offering valuable insights to job seekers.

### **AI-Powered Recommendations:**

#### **Personalized Job Suggestions:**

- Utilizes AI algorithms to provide personalized job suggestions based on users' profiles, preferences, and career goals.

#### **Skill Gap Analysis:**

- Conducts skill gap analysis and recommends relevant training opportunities to help users bridge the gap between their current skills and the requirements of desired positions.

### **Community and Forums:**

#### **Job Seeker Community:**

- Establishes a community where job seekers can connect, share experiences, and offer support to each other throughout the job search process.

#### **Ask the Expert Forums:**

- Hosts forums where industry experts and career advisors answer questions, provide insights, and offer guidance to job seekers.

### **Mobile Accessibility:**

#### **Mobile App:**

- Offers a mobile app for on-the-go job searching, application tracking, and communication with potential employers.

#### **Push Notifications:**

- Sends push notifications for new job listings, application updates, and relevant events to keep users informed in real time.



## 9. CV AND PORTFOLIO BUILDING

Provide a feature-rich tool for creating and updating CVs and portfolios. Include templates tailored to different academic disciplines and career stages. Offer guidance on optimizing content for visibility and impact. Integrate with the user's profile and goal-setting module to ensure alignment with career objectives.

### Key Features:

#### **Dynamic Templates:**

##### **Variety of Templates:**

- Offers a diverse range of professionally designed templates catering to different industries and career levels.

##### **Customization Options:**

- Provides extensive customization options, allowing users to personalize colors, fonts, and layouts to match their personal brand.

##### **Editable Sections:**

- Enables users to easily add, remove, or rearrange sections to tailor their CVs and portfolios according to their specific needs.

#### **Content Import and Parsing:**

##### **LinkedIn Integration:**

- Allows users to import data directly from their LinkedIn profiles, streamlining the process of populating the CV or portfolio.

##### **PDF and Document Parsing:**

- Supports PDF and document parsing, extracting relevant information and populating the template with ease.

#### **Multimedia Integration:**

##### **Media Embedding:**

- Enables users to embed multimedia elements such as images, videos, and links to showcase projects, presentations, and other visual accomplishments.

##### **Document Attachments:**

- Allows users to attach documents directly to the portfolio, providing additional context or showcasing publications and research papers.

#### **Skill and Competency Tracking:**

##### **Interactive Skill Clouds:**

- Visualizes users' skills in an interactive skill cloud, allowing recruiters and viewers to quickly grasp the breadth of their competencies.

##### **Skill Endorsements:**

- Supports skill endorsements, where colleagues, mentors, or supervisors can endorse specific skills to validate the user's expertise.



### **Project Showcases:**

#### **Project Highlights:**

- Includes dedicated sections for showcasing key projects, complete with descriptions, outcomes, and roles played in project teams.

#### **Visual Project Timelines:**

- Integrates visual project timelines to illustrate the progression and impact of long-term projects.

### **Publication Gallery:**

#### **Research Publications Showcase:**

- Provides a gallery-style presentation of research publications, allowing users to highlight key papers, articles, and contributions.

#### **Publication Metrics:**

- Integrates citation counts, impact factors, and other publication metrics to provide a comprehensive overview of research impact.

### **Achievements and Awards:**

#### **Accolades Section:**

- Features a dedicated section for users to showcase academic achievements, awards, and recognition received throughout their career.

#### **Certificates and Badges:**

- Allows users to display certificates, badges, and certifications earned, providing evidence of continuous learning and professional development.

### **Interactive Charts and Graphs:**

#### **Statistical Data Representation:**

- Supports the integration of interactive charts and graphs to visually represent quantitative achievements, project outcomes, or research metrics.

#### **Data Visualization Widgets:**

- Provides widgets for visualizing data sets, making it easy for viewers to comprehend complex information at a glance.

### **Feedback and Endorsement Requests:**

#### **Request for Feedback:**

- Enables users to send requests for feedback and endorsements to peers, mentors, or colleagues directly through the platform.

#### **Endorsement Display:**

- Integrates received endorsements and feedback into the CV or portfolio, enhancing credibility and showcasing professional relationships.

### **Privacy Controls:**

#### **Selective Visibility:**

- Allows users to set privacy controls, deciding which sections or details are visible to the public, specific viewers, or remain private.

#### **Password-Protected Portfolios:**

- Offers the option to password-protect portfolios for an additional layer of privacy and control over access.

**Mobile-Optimized Design:**

**Responsive Design:**

- Ensures that CVs and portfolios created with Profilify+ are fully responsive, providing an optimal viewing experience across various devices, including smartphones and tablets.

**Mobile App Access:**

- Provides a mobile app for users to create, update, and share their CVs and portfolios on the go.



## 10. FUNDING OPPORTUNITIES

Create a centralized hub for funding opportunities, with a focus on grants, scholarships, and fellowships. Implement a personalized recommendation system based on the user's research focus and career stage. Offer guidance on preparing competitive grant applications and navigating the funding landscape.

### **CENTRALIZED HUB:**

#### **Key Features:**

##### **User-Friendly Dashboard:**

###### **Personalized User Profiles:**

- Users create personalized profiles indicating their academic background, research interests, and career goals, enabling the platform to provide tailored funding recommendations.

###### **Dashboard Overview:**

- A user-friendly dashboard displays recommended opportunities, upcoming deadlines, and personalized updates based on the user's profile and preferences.

##### **Comprehensive Database:**

###### **Diverse Funding Categories:**

- Categorizes funding opportunities into grants, scholarships, and fellowships, with subcategories based on academic level, research field, and eligibility criteria.

###### **International Opportunities:**

- Includes funding opportunities from global sources, offering a comprehensive database for users looking beyond regional or national opportunities.

###### **Filtering and Search Options:**

- Advanced filtering options and a robust search function allow users to quickly find opportunities that match their specific criteria.

##### **Detailed Opportunity Listings:**

###### **Clear Eligibility Criteria:**

- Provides clear and detailed eligibility criteria for each funding opportunity, ensuring users understand the requirements before applying.

###### **Application Deadlines:**

- Displays application deadlines prominently, accompanied by reminders and notifications to help users stay organized.

###### **Award Amount and Duration:**

- Clearly states the award amount, funding duration, and any additional benefits associated with each opportunity.



### **Application Guidance:**

#### **Application Procedures:**

- Offers step-by-step guidance on the application process, including required documents, submission guidelines, and key milestones.

#### **Tips and Best Practices:**

- Provides tips and best practices for crafting strong applications, enhancing the chances of success.

### **Customized Alerts and Notifications:**

#### **Personalized Alerts:**

- Users receive personalized alerts and notifications about new funding opportunities matching their profile and interests.

#### **Deadline Reminders:**

- Automated deadline reminders ensure that users are aware of upcoming application deadlines.

### **Collaborative Features:**

#### **Collaborative Opportunities:**

- Facilitates collaboration by highlighting funding opportunities suitable for group applications or collaborative research projects.

#### **Team Formation:**

- Allows users to form teams or partnerships within the platform, connecting researchers with complementary skills and interests.

### **Application Tracking:**

#### **Application Status Tracker:**

- Integrates a feature that enables users to track the status of their submitted applications, from initial submission to final decisions.

#### **Feedback Loop:**

- Provides a feedback loop where users can receive feedback on unsuccessful applications to improve future submissions.

### **Resource Library:**

#### **Funding Guides and Resources:**

- Includes a resource library with guides, templates, and resources on successful grant writing, scholarship applications, and fellowship proposals.

#### **Success Stories:**

- Showcases success stories of individuals who secured funding through the platform, providing inspiration and insights for others.

### **Community and Networking:**

#### **Discussion Forums:**

- Incorporates discussion forums where users can share experiences, ask questions, and offer advice related to funding opportunities.

#### **Mentorship Connections:**

- Facilitates mentorship connections, allowing experienced individuals to mentor those seeking guidance on funding applications.



**Analytics and Insights:**

**Usage Analytics:**

- Provides analytics on user engagement, popular opportunities, and success rates, offering insights to both users and administrators.

**Trend Analysis:**

- Offers trend analysis on funding opportunities, helping users stay informed about emerging trends in research and scholarship funding.

**Mobile Accessibility:**

**Mobile App:**

- Offers a mobile app for on-the-go access, allowing users to browse opportunities, receive notifications, and track applications from their mobile devices.

**Push Notifications:**

- Sends push notifications for new opportunities, application reminders, and important updates directly to users' mobile devices.



## 11. PROGRESS TRACKING

Design a user-friendly progress tracking interface that allows users to visualize their research milestones, publication records, and other academic achievements. Implement interactive charts and graphs to showcase trends and patterns over time. Provide insights and recommendations based on the user's progress.

### PROGRESS TRACKING:

#### Key Features:

##### Dashboard Overview:

###### At-a-Glance Progress:

- A visually appealing dashboard presents an at-a-glance overview of a user's research milestones, publications, and other academic achievements.

###### Customizable Widgets:

- Users can customize their dashboard by adding widgets that represent specific categories of achievements, allowing for a personalized experience.

##### Research Milestones Tracker:

###### Timeline Visualization:

- Displays a visual timeline of key research milestones, such as project initiation, data collection, analysis, and project completion.

###### Color-Coded Milestones:

- Color-coded milestones make it easy for users to differentiate between completed, ongoing, and upcoming tasks.

###### Filtering Options:

- Provides filtering options to view milestones based on projects, timeframes, or specific categories.

##### Publication Records Overview:

###### Publication Metrics:

- Visualizes publication metrics, including the number of publications, citation counts, and impact factors, allowing users to gauge the impact of their research.

###### Publication Timeline:

- A timeline view shows when each publication was published, helping users track the progression of their research output over time.

##### Achievement Badges and Certificates:

###### Virtual Badges:

- Users earn virtual badges for reaching specific achievements, such as completing a project, publishing a paper, or receiving awards.

###### Certificates of Achievement:

- Offers printable certificates of achievement for users to include in their portfolios or resumes.





### **Collaboration Network Visualization:**

#### **Network Graph:**

- Visualizes the user's collaboration network, illustrating co-authors, collaborators, and connections within the academic community.

#### **Interactive Nodes:**

- Users can interact with nodes to view details about each collaborator and explore their joint projects.

### **Research Output Analytics:**

#### **Publication Types Breakdown:**

- Analyzes the types of publications (e.g., journal articles, conference papers) to provide insights into the user's research focus.

#### **Keyword Analysis:**

- Conducts keyword analysis to identify prominent themes and topics within the user's research publications.

### **Impact Factor Tracker:**

#### **Impact Factor Trends:**

- Visualizes the trends in impact factors for each publication, helping users understand the influence of their research over time.

#### **Comparison Metrics:**

- Provides metrics for comparing impact factors across different publications, aiding in assessing the significance of each work.

### **Collaborative Project Analytics:**

#### **Project Contribution Visualizer:**

- Illustrates the user's contribution to collaborative projects, showcasing their role and impact within each team effort.

#### **Success Metrics:**

- Analyzes the success metrics of collaborative projects, such as project completion rates and positive outcomes.

### **Progress Reports and Summaries:**

#### **Automated Progress Reports:**

- Generates automated progress reports summarizing recent achievements, milestones, and upcoming goals, which users can share with mentors or collaborators.

#### **Exportable Reports:**

- Allows users to export progress reports in various formats for inclusion in grant applications, performance evaluations, or personal records.

### **Timeline Customization and Annotation:**

#### **Customizable Timeline Views:**

- Users can customize their timeline views, choosing specific timeframes or categories of milestones to focus on.

#### **Annotation Features:**

- Users can add annotations to the timeline to highlight significant events, challenges, or reflections related to their academic journey.



**Mobile-Optimized Interface:**

**Responsive Design:**

- Ensures the interface is fully responsive, providing an optimal user experience on both desktop and mobile devices.

**Mobile App Access:**

- Offers a mobile app for users to track and visualize their academic progress on the go.



## 12. COMMUNITY BUILDING

Foster a vibrant and inclusive community through features such as interest-based discussion forums, virtual coffee chats, and collaborative projects. Implement recognition systems to celebrate contributions and achievements within the community. Facilitate mentor-mentee pairs to engage with the broader user community.

### COMMUNITY:

#### Key Features:

##### Interest-Based Discussion Forums:

###### Diverse Topics:

- Hosts discussion forums covering a wide range of research and academic topics, allowing users to explore and engage in areas of interest.

###### Specialized Sub-Forums:

- Creates specialized sub-forums for specific research disciplines, facilitating focused discussions and knowledge exchange within niche areas.

###### Moderation and Guidelines:

- Implements moderation features and community guidelines to ensure a respectful and inclusive environment for all participants.

##### Virtual Coffee Chats:

###### Random Matching System:

- Incorporates a virtual coffee chat feature that randomly matches community members for informal virtual meetings, promoting spontaneous connections.

###### Scheduled Networking Events:

- Organizes scheduled virtual coffee chat events, allowing members to sign up for structured networking opportunities based on shared interests or research themes.

###### Icebreaker Prompts:

- Includes icebreaker prompts to initiate conversations during virtual coffee chats, making interactions more engaging and enjoyable.

##### Collaborative Projects Hub:

###### Project Matching:

- Establishes a hub for collaborative projects, where users can post project ideas or join existing projects based on their expertise and interests.

###### Project Forums:

- Creates dedicated forums for each collaborative project, providing a space for team discussions, progress updates, and resource sharing.

###### Acknowledgment and Recognition:

- Incorporates features for acknowledging and recognizing the contributions of individuals within collaborative projects, fostering a culture of appreciation.



**Expert Mentorship Program:**

**Mentor-Mentee Matching:**

- Implements a mentorship program that matches experienced researchers with mentees based on expertise, career goals, and areas of interest.

**Structured Mentorship Paths:**

- Offers structured mentorship paths with defined goals and milestones, ensuring a meaningful and supportive mentorship experience.

**Periodic Check-Ins:**

- Facilitates periodic check-ins between mentors and mentees, providing opportunities for guidance, advice, and feedback.

**Resource Sharing Hub:**

**Centralized Resource Repository:**

- Establishes a centralized hub for resource sharing, allowing community members to upload and access research papers, articles, datasets, and other valuable resources.

**Tagging and Categorization:**

- Implements tagging and categorization features to organize resources based on topics, making it easy for users to discover relevant content.

**User Ratings and Reviews:**

- Allows users to rate and review shared resources, providing valuable feedback to the community and enhancing the quality of shared content.

**Events and Webinars Platform:**

**Event Calendar:**

- Maintains an event calendar showcasing upcoming research conferences, webinars, and seminars, promoting awareness of relevant academic events.

**Virtual Event Hosting:**

- Facilitates the hosting of virtual events within the community, including webinars, panel discussions, and academic forums.

**Event RSVP and Networking:**

- Integrates features for members to RSVP for events and engage in networking activities during virtual conferences or webinars.

**Inclusive Communication Channels:**

**Multi-Channel Communication:**

- Provides various communication channels, including forums, direct messaging, and group chats, to accommodate different preferences and communication styles.

**Language Support:**

- Supports multiple languages to ensure inclusivity and accessibility for researchers from diverse linguistic backgrounds.

**Accessibility Features:**

- Implements accessibility features, such as text-to-speech and screen reader compatibility, to enhance the inclusivity of the community platform.



**Community Recognition and Awards:**

**Outstanding Contributions Awards:**

- Recognizes outstanding contributions within the community through awards and accolades, celebrating members' achievements.

**Monthly Spotlights:**

- Features monthly spotlights on community members, showcasing their research, accomplishments, and contributions to the academic community.

**Peer Nominations:**

- Allows members to nominate their peers for recognition, fostering a culture of appreciation and support.

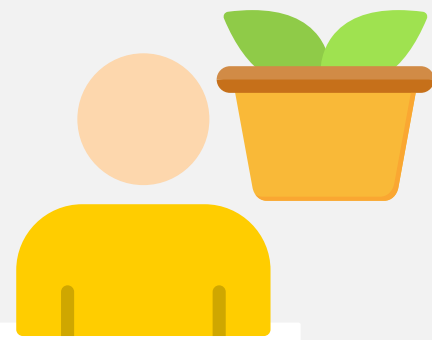
**Mobile App Integration:**

**Mobile-Friendly Design:**

- Ensures a mobile-friendly design for seamless access to community features on smartphones and tablets.

**Push Notifications:**

- Sends push notifications for community updates, new discussions, and upcoming events, keeping members informed in real time.



## 13. PERSONAL DEVELOPMENT MODULES

Foster a vibrant and inclusive community through features such as interest-based discussion forums, virtual coffee chats, and collaborative projects. Implement recognition systems to celebrate contributions and achievements within the community. Facilitate mentor-mentee pairs to engage with the broader user community.

### PERSONAL DEVELOPMENT MODULES:

#### Time Management Mastery:

##### Goal Setting:

- Teaches effective goal-setting techniques to help researchers define clear objectives for their projects and personal development.

##### Prioritization Strategies:

- Provides strategies for prioritizing tasks based on importance and urgency, optimizing productivity and time utilization.

##### Time Blocking and Scheduling:

- Introduces time-blocking methods and scheduling techniques to create efficient daily, weekly, and long-term plans.

#### Stress Resilience and Well-being:

##### Stress Awareness:

- Raises awareness about stress triggers and the impact of stress on mental and physical well-being.

##### Mindfulness and Relaxation Techniques:

- Introduces mindfulness practices, relaxation techniques, and stress-reducing exercises to enhance resilience.

##### Work-Life Balance Strategies:

- Provides strategies for achieving a healthy work-life balance, preventing burnout, and fostering overall well-being.

#### Effective Communication Skills:

##### Written Communication:

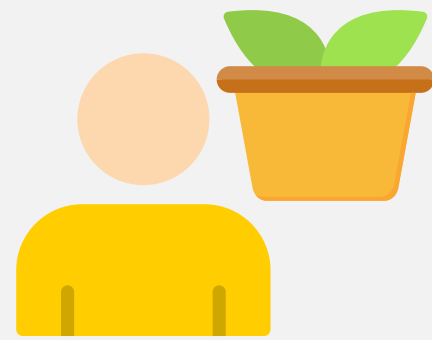
- Guides researchers in improving written communication skills for publications, grant applications, and collaborative projects.

##### Presentation Skills:

- Offers tips and techniques for delivering impactful presentations, including public speaking, visual aids, and engaging the audience.

##### Interpersonal Communication:

- Focuses on enhancing interpersonal communication, active listening, and fostering effective collaborations within research teams.



### **Leadership Development:**

#### **Leadership Styles:**

- Explores various leadership styles and helps researchers identify and develop their unique leadership approach.

#### **Team Building and Management:**

- Provides insights into team dynamics, conflict resolution, and effective management of research teams.

#### **Inspirational Leadership:**

- Guides researchers in cultivating inspirational leadership qualities to motivate and empower their teams.

### **Interdisciplinary Collaboration:**

#### **Understanding Interdisciplinary Research:**

- Educates researchers on the importance of interdisciplinary collaboration and its role in advancing research outcomes.

#### **Cross-Disciplinary Communication:**

- Teaches effective communication strategies when collaborating with researchers from different disciplines.

#### **Integration of Perspectives:**

- Encourages the integration of diverse perspectives to solve complex problems and drive innovation.

### **Critical Thinking and Problem Solving:**

#### **Analytical Thinking:**

- Develops skills in analytical thinking and problem-solving, critical for addressing research challenges.

#### **Decision Making:**

- Guides researchers in making informed decisions based on evidence, data analysis, and ethical considerations.

#### **Creative Problem-Solving Techniques:**

- Introduces creative problem-solving techniques to stimulate innovative approaches to research questions.

### **Networking and Professional Relationships:**

#### **Building a Professional Network:**

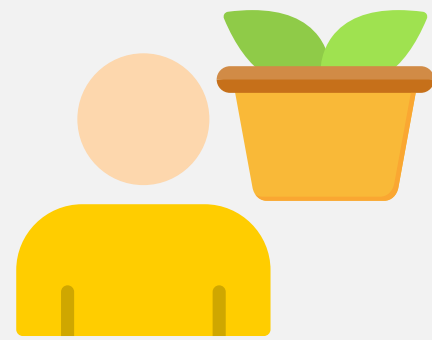
- Offers strategies for building and maintaining a strong professional network within and beyond academia.

#### **Effective Networking Skills:**

- Provides tips on effective networking, attending conferences, and leveraging social media for professional growth.

#### **Mentorship and Collaboration:**

- Emphasizes the importance of mentorship and collaborative relationships in career development.



### **Adaptability and Resilience:**

#### **Adapting to Change:**

- Equips researchers with skills to navigate and adapt to changes in their research environment and academic landscape.

#### **Resilience Building:**

- Provides tools for building resilience in the face of setbacks, rejections, and unexpected challenges.

#### **Continuous Learning Mindset:**

- Encourages a continuous learning mindset to stay abreast of new developments in the field and embrace opportunities for growth.

### **Project Management Essentials:**

#### **Project Planning and Execution:**

- Teaches fundamental project management principles, including planning, execution, and monitoring.

#### **Resource Management:**

- Covers effective resource allocation, budgeting, and time management for successful project outcomes.

#### **Risk Assessment and Mitigation:**

- Guides researchers in identifying and mitigating potential risks associated with their research projects.

### **Ethical Decision-Making:**

#### **Research Ethics:**

- Explores ethical considerations in research, including human subjects, data integrity, and responsible conduct.

#### **Case Studies and Discussions:**

- Engages researchers in ethical case studies and discussions to develop ethical decision-making skills.

#### **Integrity in Research:**

- Promotes a culture of integrity, transparency, and responsible research practices.

### **Self-Reflection and Professional Development Planning:**

#### **Career Visioning:**

- Guides researchers in defining their long-term career vision and setting achievable career goals.

#### **Skills Gap Analysis:**

- Assists in conducting a skills gap analysis to identify areas for improvement and focused development.

#### **Individual Development Plans:**

- Helps researchers create personalized development plans for continuous improvement and advancement.





## 14. USER SUPPORT

Implement a responsive and multi-channel user support system that includes chat support, email assistance, and a comprehensive knowledge base. Integrate a ticketing system for tracking and resolving user issues efficiently. Provide regular updates on system enhancements and improvements based on user feedback.

### SUPPORT HUB:

#### Chat Support:

##### Real-Time Assistance:

- Offers a live chat support feature for users to get real-time assistance from support representatives.

##### Instant Query Resolution:

- Enables users to ask questions, seek guidance, or report issues directly through the chat interface for quick query resolution.

##### Chatbot Integration:

- Integrates a chatbot for handling routine queries, providing immediate responses, and directing users to relevant resources.

#### Email Assistance:

##### Ticketing System:

- Implements a ticketing system for users to submit detailed queries, report issues, or request assistance via email.

##### Automated Acknowledgments:

- Sends automated acknowledgment emails upon ticket submission, assuring users that their requests are received.

##### Timely Responses:

- Ensures timely and personalized responses from support agents, addressing the user's specific needs or concerns.

#### Comprehensive Knowledge Base:

##### Self-Help Resources:

- Develops a comprehensive knowledge base with articles, tutorials, FAQs, and troubleshooting guides to empower users to find answers independently.

##### Searchable Content:

- Implements a user-friendly search function within the knowledge base for users to quickly locate relevant information.

##### Video Tutorials:

- Includes video tutorials and walkthroughs to cater to different learning preferences and provide visual guidance.



### **Community Forums:**

#### **Peer-to-Peer Support:**

- Establishes community forums where users can engage in peer-to-peer support, share experiences, and seek advice from other community members.

#### **Moderation and Expert Participation:**

- Employs moderation to ensure a positive and respectful environment, and encourages participation from experts or experienced users.

### **Social Media Engagement:**

#### **Active Social Media Presence:**

- Maintains an active presence on social media platforms to address user queries, share updates, and engage with the community.

#### **Direct Messaging:**

- Allows users to reach out via direct messaging on social media for quick and direct communication with support representatives.

### **Feedback Loops:**

#### **User Surveys:**

- Conducts regular user satisfaction surveys to gather feedback on the support experience and identify areas for improvement.

#### **Feedback Forms:**

- Integrates feedback forms within the support interface for users to provide specific feedback on interactions with support agents.

### **Multilingual Support:**

#### **Language Options:**

- Offers multilingual support to accommodate users from diverse linguistic backgrounds, ensuring language is not a barrier to assistance.

#### **Translation Services:**

- Provides translation services for queries and responses to ensure clear communication between users and support representatives.

### **Interactive Troubleshooting Guides:**

#### **Step-by-Step Guides:**

- Develops interactive troubleshooting guides that lead users through step-by-step solutions for common issues.

#### **Visual Aids:**

- Includes visual aids such as diagrams, screenshots, and interactive elements to enhance the clarity of troubleshooting instructions.

### **Escalation Paths:**

#### **Priority Handling:**

- Establishes escalation paths for urgent issues, ensuring that critical matters are promptly addressed with priority handling.

#### **Escalation Contacts:**

- Provides contact information for escalation contacts or specialized support teams for complex or high-priority concerns.



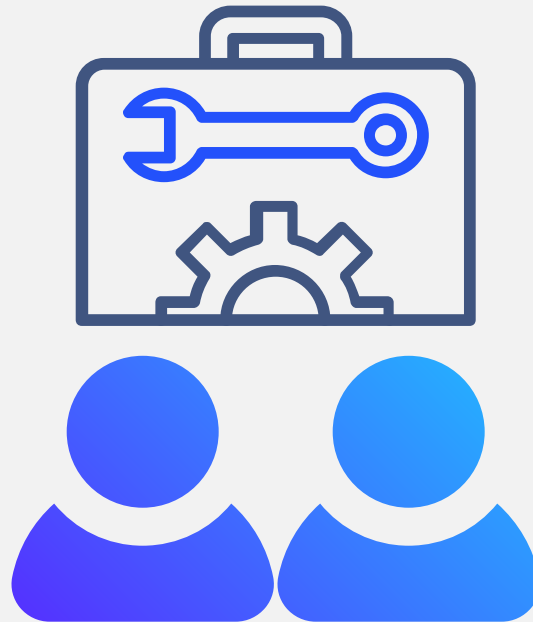
**Training Webinars and Workshops:**

**Educational Sessions:**

- Conducts periodic training webinars and workshops to educate users on platform features, updates, and best practices.

**Q&A Sessions:**

- Includes Q&A sessions during webinars to address live questions from users and provide real-time assistance.



These expanded features aim to create a highly sophisticated and user-centric mentoring tool for early career researchers, offering a holistic and dynamic platform to support their academic and professional journeys.